

Linha 04 – 265 km
Saída p Caldas Novas (Limoeiro)

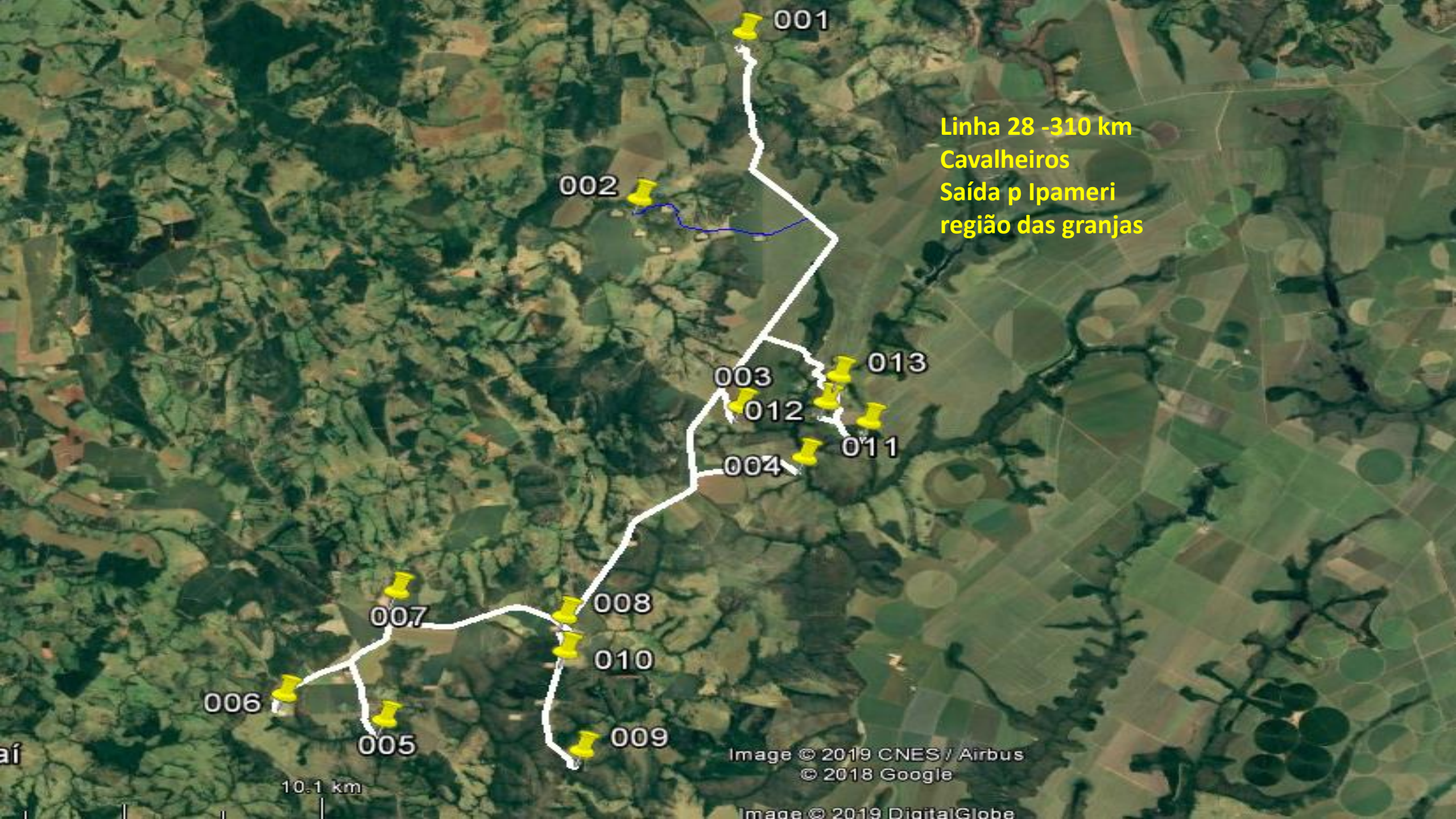


5.32 km

© 2018 Google

Image © 2019 DigitalGlobe

Google



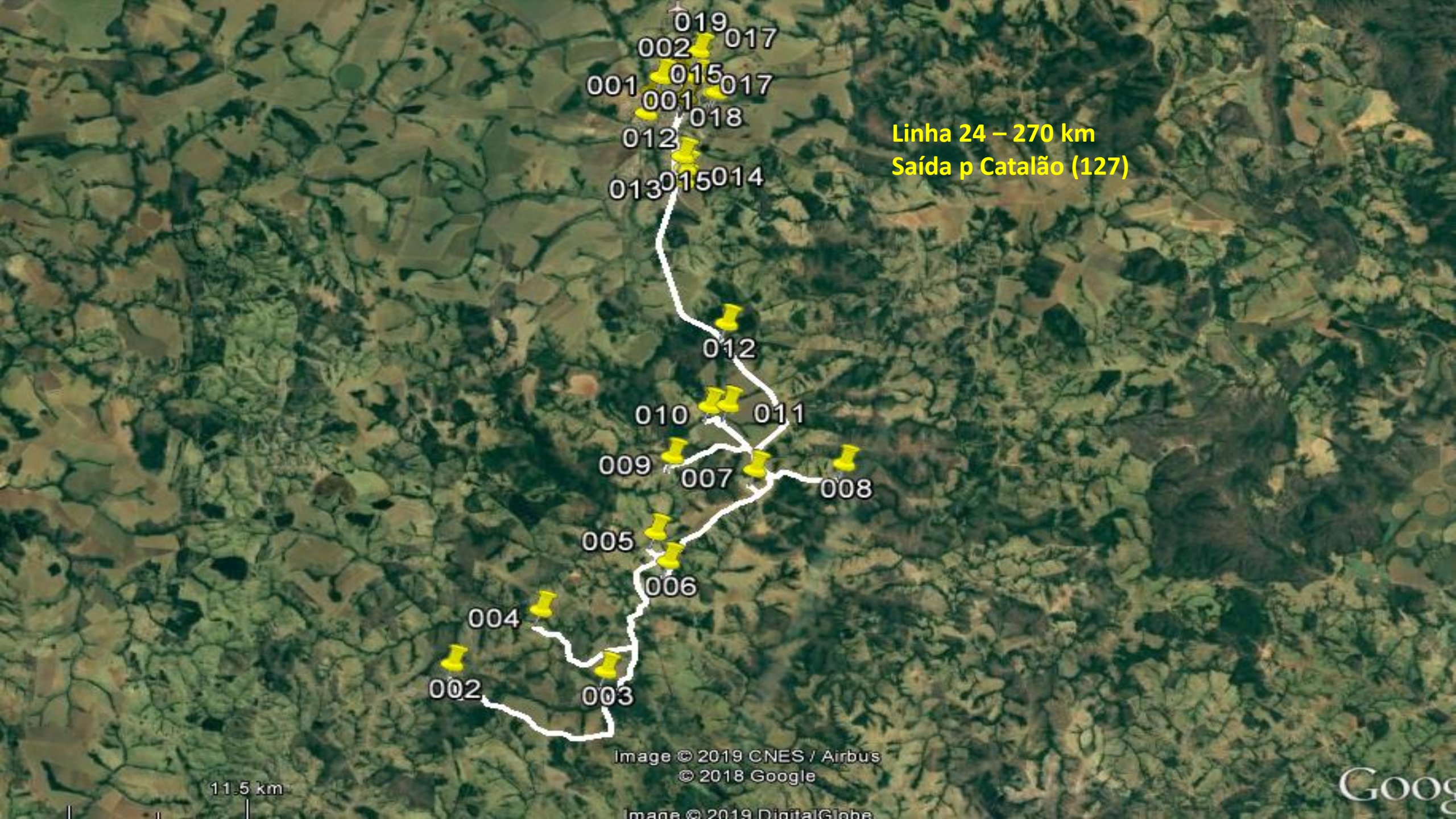
Linha 28 -310 km
Cavalheiros
Saída p Ipameri
região das granjas

Image © 2019 CNES / Airbus
© 2018 Google

Image © 2019 DigitalGlobe

10.1 km

af



Linha 24 – 270 km
Saída p Catalão (127)

- 019
- 002
- 017
- 001
- 015
- 017
- 001
- 018
- 012
- 013
- 015
- 014
- 012
- 010
- 011
- 009
- 007
- 008
- 005
- 006
- 004
- 002
- 003

Image © 2019 CNES / Airbus
© 2018 Google

Image © 2019 DigitalGlobe

11.5 km

Goog

Vendinha

Linha 10 – 270 km
Saída p Caldas Novas (Região Corumbá)



11.5 km

Image © 2019 DigitalGlobe
© 2018 Google

Image © 2019 DigitalGlobe

GOO

**Linha 09 – 210 km
Encruzilhada**



5.69 km

Image © 2019 CNES / Airbus
© 2018 Google
Image © 2019 DigitalGlobe

Google



Cristalina

005

001 006

Linha 31 - 332 km
Domiciano Ribeiro
Lasa

002
004

003

24.3 km

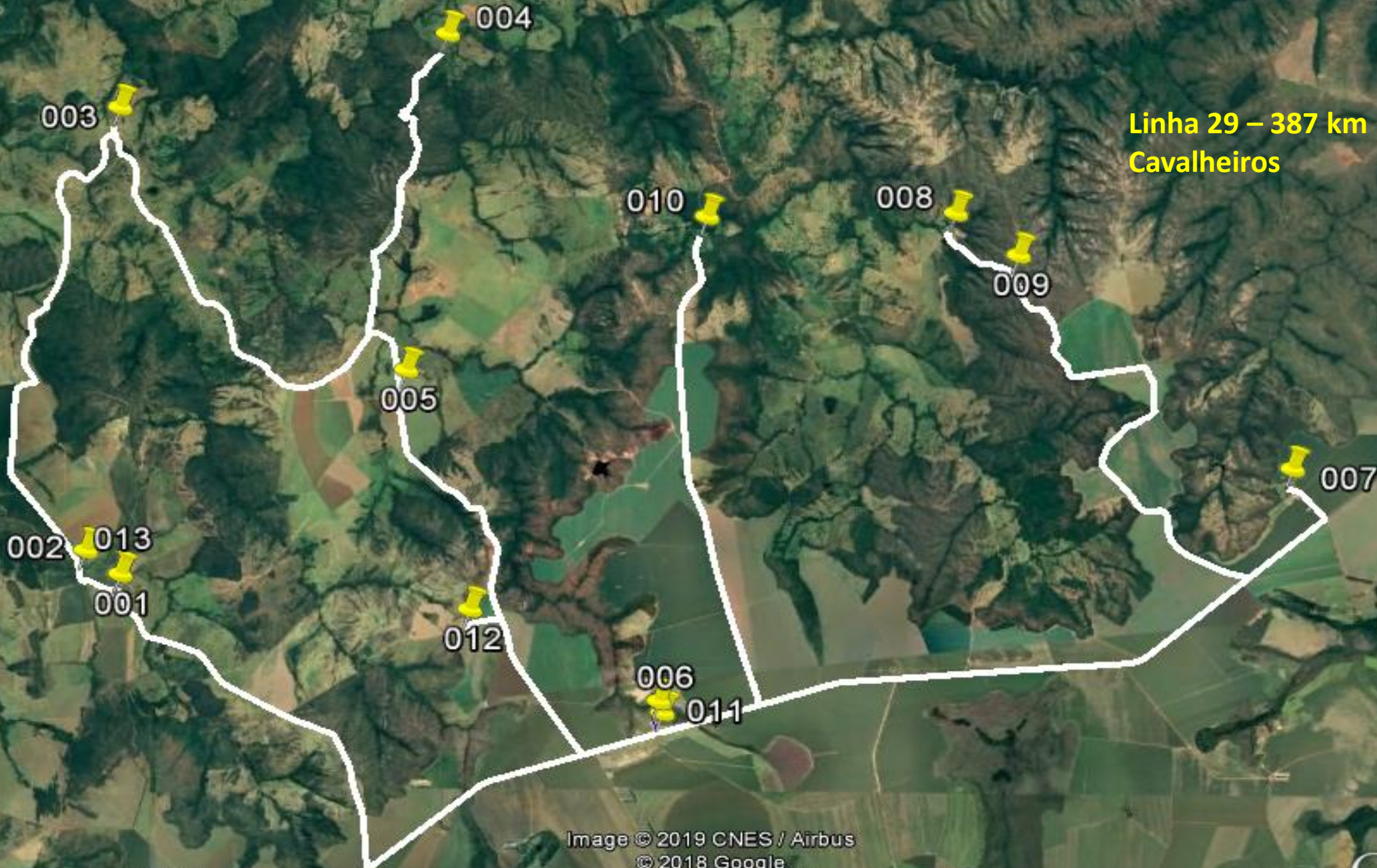
© 2018 Google
Image Landsat / Copernicus

Linha 13 – 240 km
Assentamento Olga Benário
Vespertino



3.82 km

**Linha 29 – 387 km
Cavalheiros**



6.21 km

Image © 2019 CNES / Airbus
© 2018 Google

Image © 2019 DigitalGlobe

Google

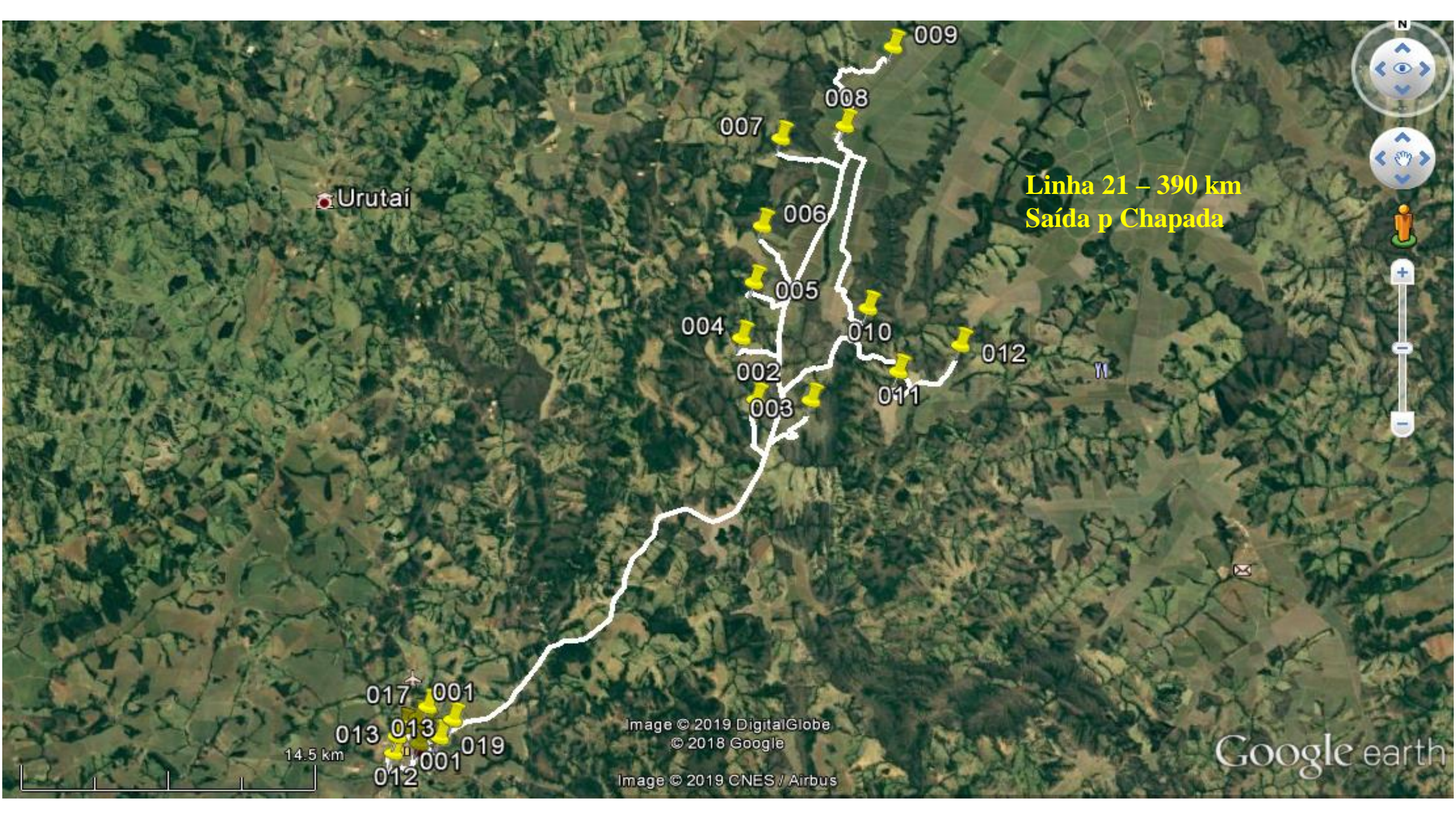
Linha 12 – 164 km
Assentamento Olga Benário
Noturno



5.09 km

Image © 2019 DigitalGlobe
© 2018 Google

Goog



Urutaí

Linha 21 - 390 km
Saída p Chapada

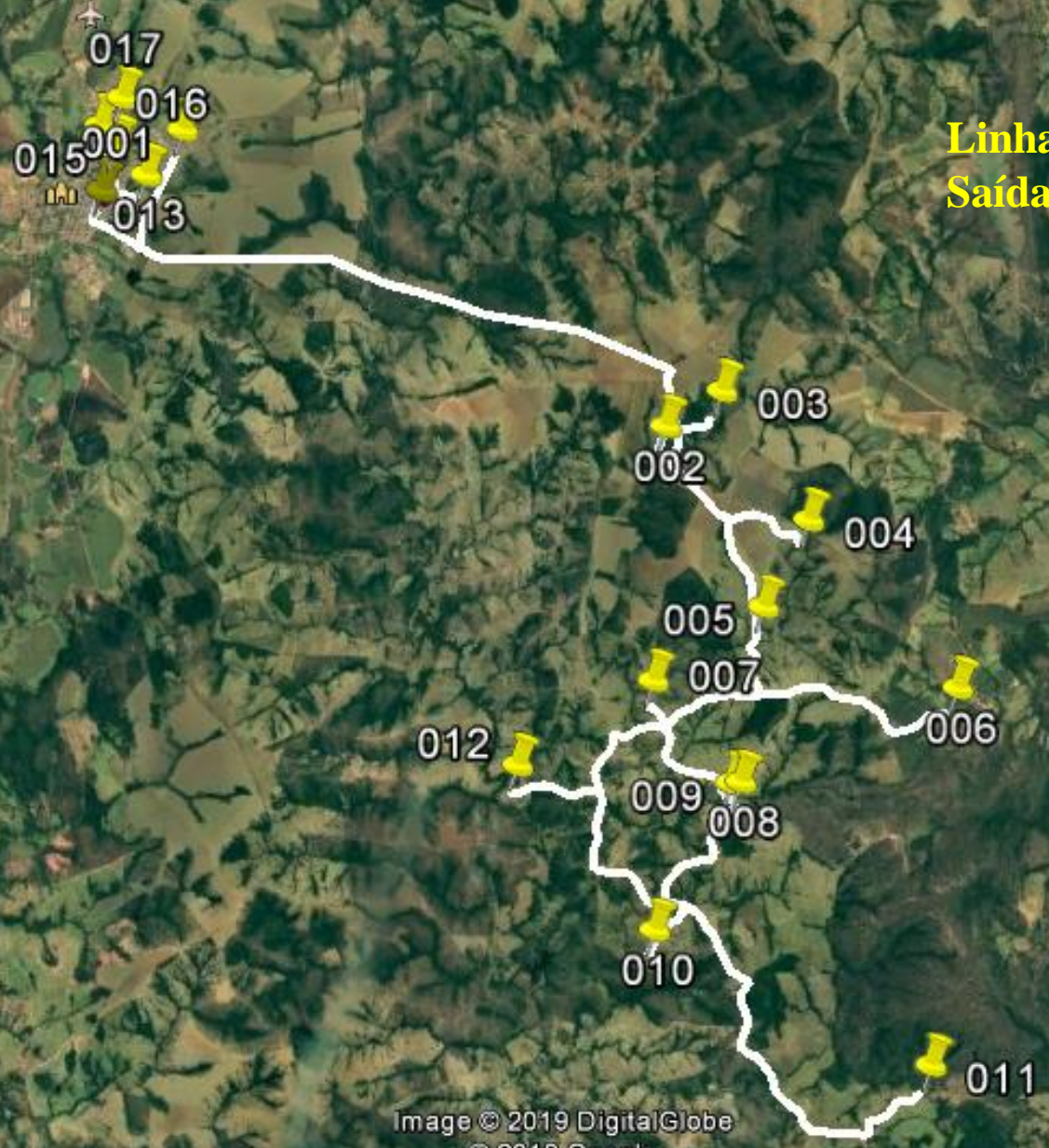
14.5 km

Image © 2019 DigitalGlobe
© 2018 Google

Image © 2019 CNES / Airbus

Google earth

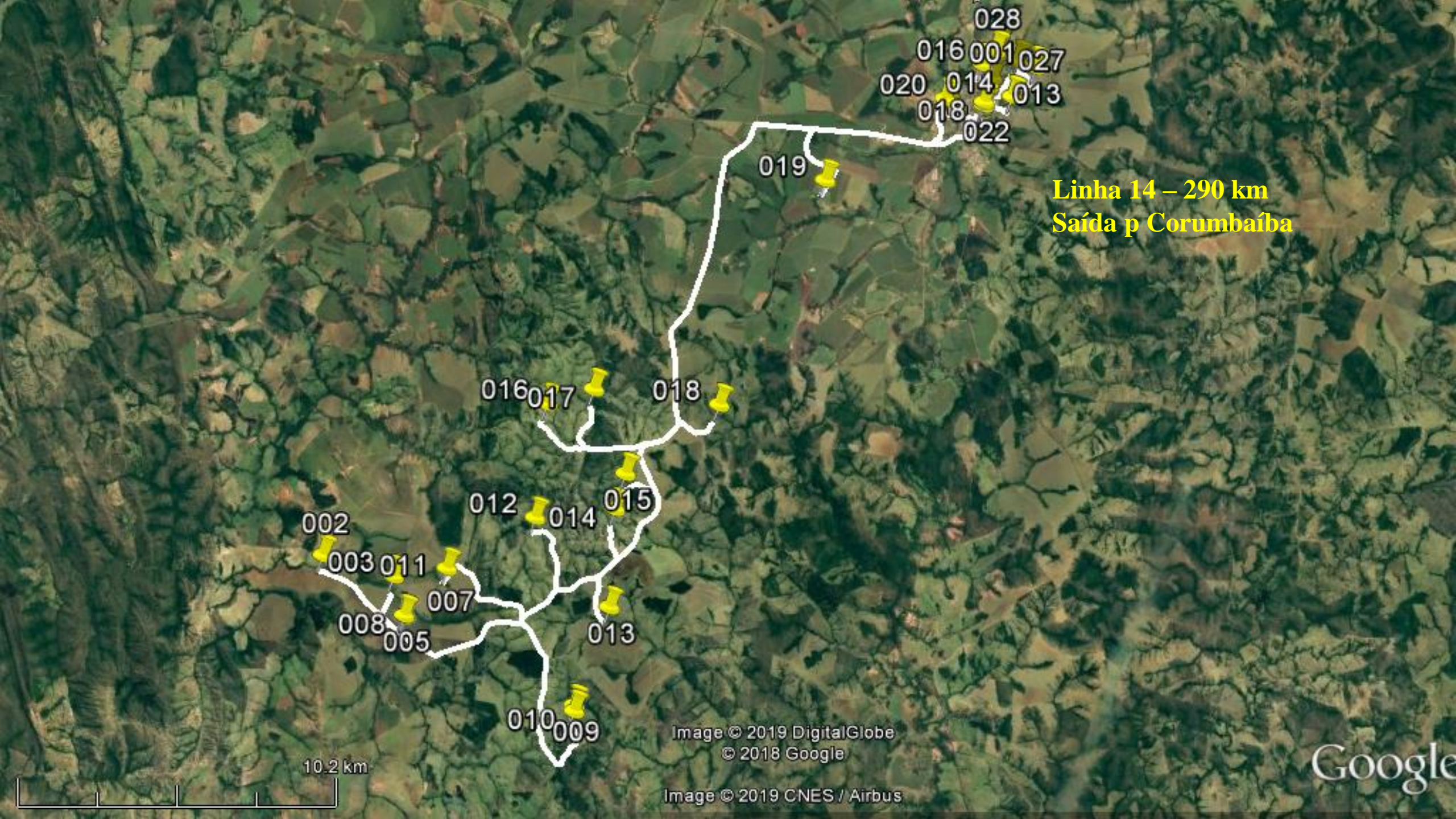
Linha 20 – 226 km
Saída p Campo Alegre



9.95 km

Image © 2019 DigitalGlobe
© 2018 Google
Image © 2019 CNES / Airbus

Google earth



Linha 14 – 290 km
Saída p Corumbaíba

10.2 km

Image © 2019 DigitalGlobe
© 2018 Google
Image © 2019 CNES / Airbus

Google



Linha 16 – 259 km
Saída p Vendinha

002

004 003

005 Vendinha

006

008 007

009

010

011

012

017

018 019

017

001

014

016

013

018

021

013

7.75 km

© 2018 Google

Google



Linha 19 – 213 km
Saída p Hipódromo II

012

010

011

008

009

007

006

005

004

002

003

016

015

017

015

017

013

014

12.3 km

Image © 2019 CNES / Airbus
© 2018 Google

Image © 2019 DigitalGlobe

Goog



Linha 18 – 217 km
Saída p Hipódromo I

Vendinha

9.78 km

Image © 2019 DigitalGlobe
© 2018 Google

Google



Linha 06 – 300 km
Saída p Caldas Novas



7.78 km

© 2018 Google

Image © 2019 DigitalGlobe

Google

**Linha 30 – 298 km
Bauzinho I**

Domiciano Ribeiro ● 001



Linha 35 – 301 km
Domiciano Ribeiro
Sentido Cavalheiros

016⁰⁰⁷

015
009
008

014

013

011
010
012

Image © 2019 DigitalGlobe
Image © 2019 Maxar Technologies
© 2018 Google
Image © 2019 CNES / Airbus

14.6 km



Linha 32 – 334 km
Domiciano Ribeiro
Sentido Soledade



Linha 33 – 300 km
Domiciano Ribeiro
Sent ~~do~~ Lasa

14.5 km

002

004

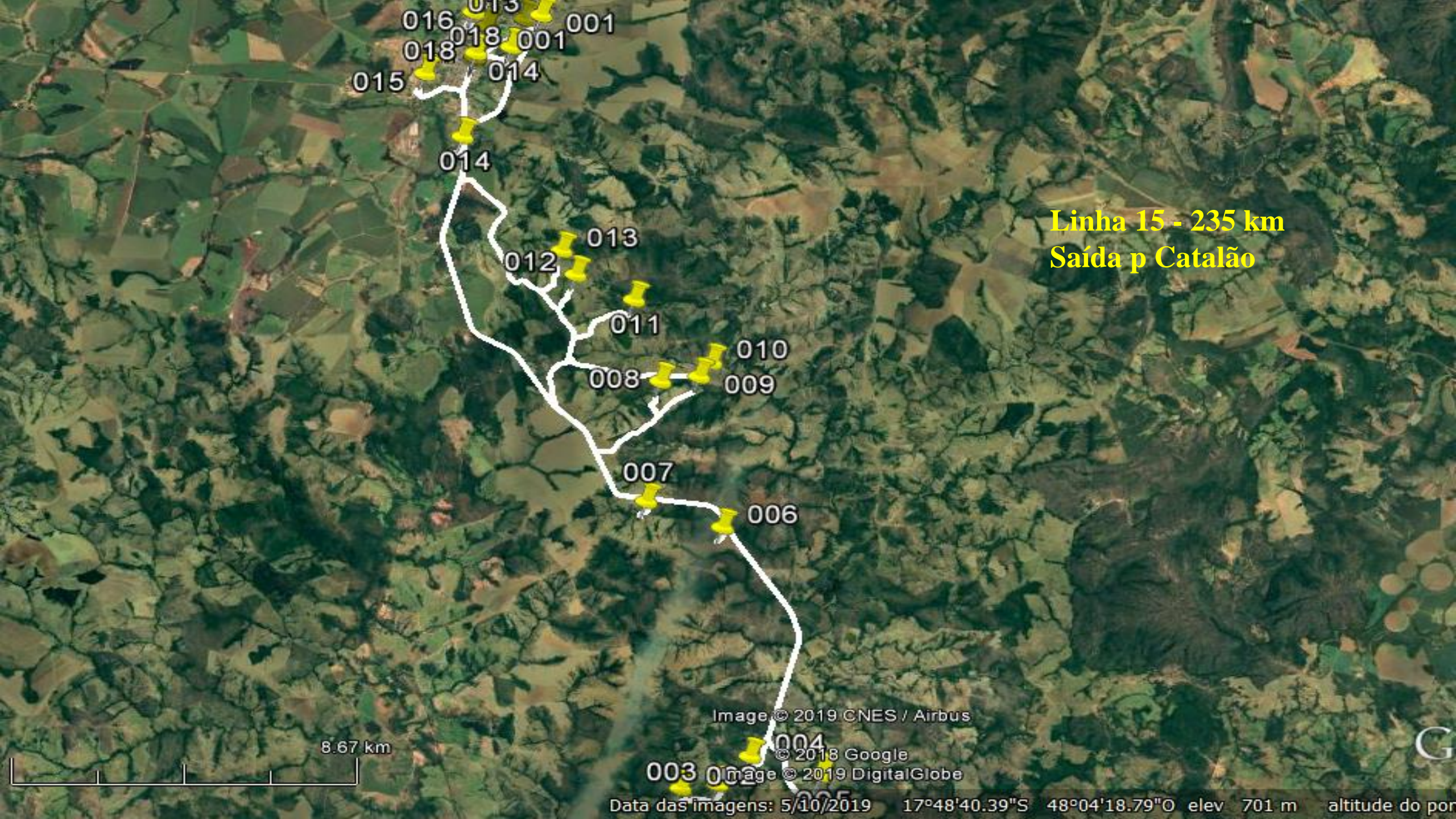
003

005

006

007

Image © 2019 DigitalGlobe
© 2018 Google
Image © 2019 CNES / Airbus
Image © 2019 Maxar Technologies



Linha 15 - 235 km
Saída p Catalão

016 013 001
018 018 001
015 014

014

012 013

011

008 010
009

007

006

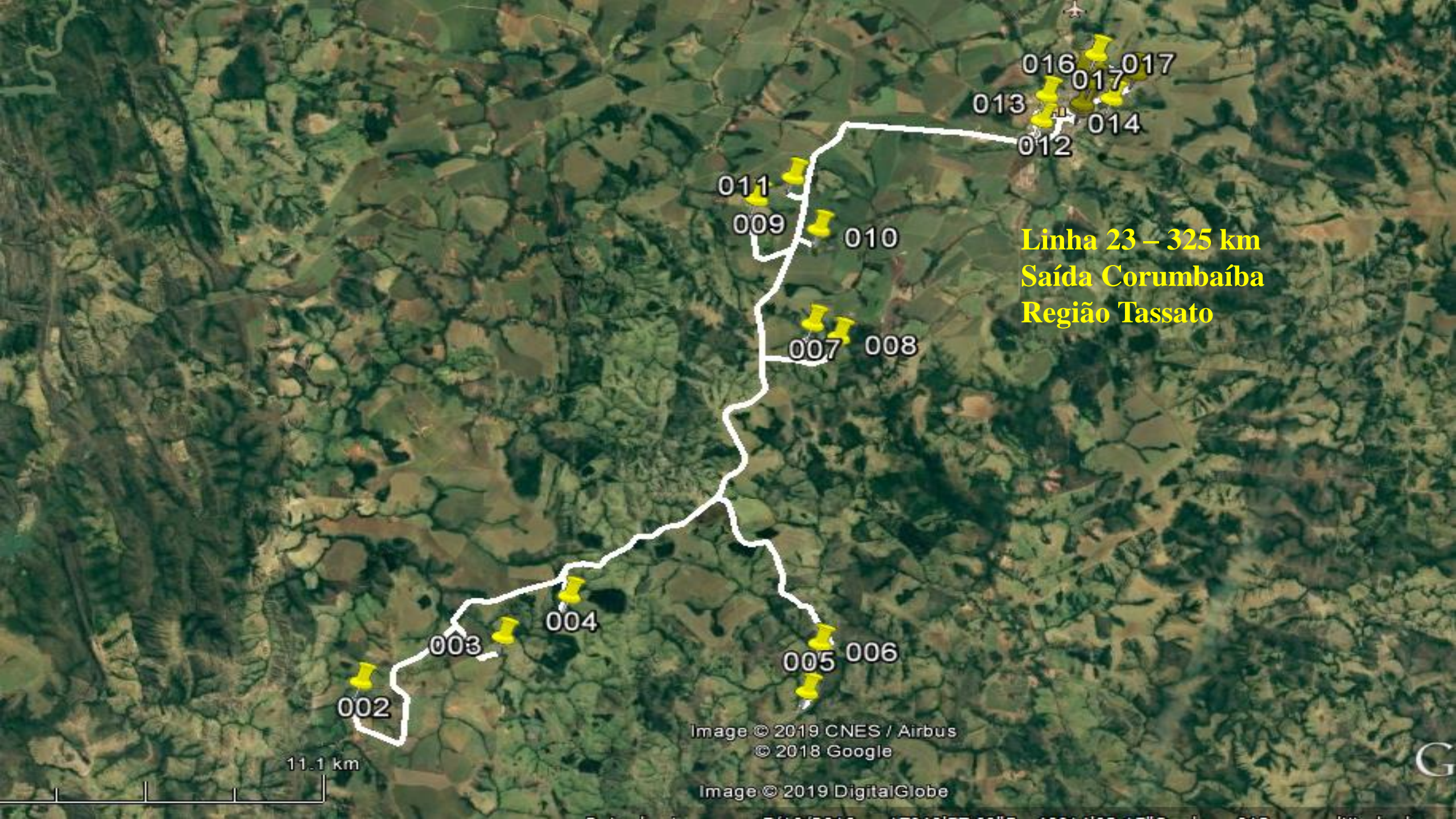
Image © 2019 CNES / Airbus

© 2018 Google

Image © 2019 DigitalGlobe

8.67 km

Data das imagens: 5/10/2019 17°48'40.39"S 48°04'18.79"O elev 701 m altitude do por



Linha 23 – 325 km
Saída Corumbaíba
Região Tassato

002

003



004

005

006

007

008

011

009

010

013

012

017

014

11.1 km

Image © 2019 CNES / Airbus

© 2018 Google

Image © 2019 DigitalGlobe

G

**Linha 26 – 375 km
Cavalheiros
Pedra branca**



6.57 km

Image © 2019 DigitalGlobe
© 2018 Google

Image © 2019 CNES / Airbus

17322126 6612 17325126 6712 17328126 6812 17331126 6912

**Linha 25 – 380 km
Brasil Verde**



9.70 km

Image © 2019 DigitalGlobe
© 2018 Google

Image © 2019 CNES / Airbus

G

Domiciano Ribeiro ● 001

W

Linha 34 – 240 km
Domiciano
Bauzinho II

014

013

025

024

020

019

015

018

017

016

023

021

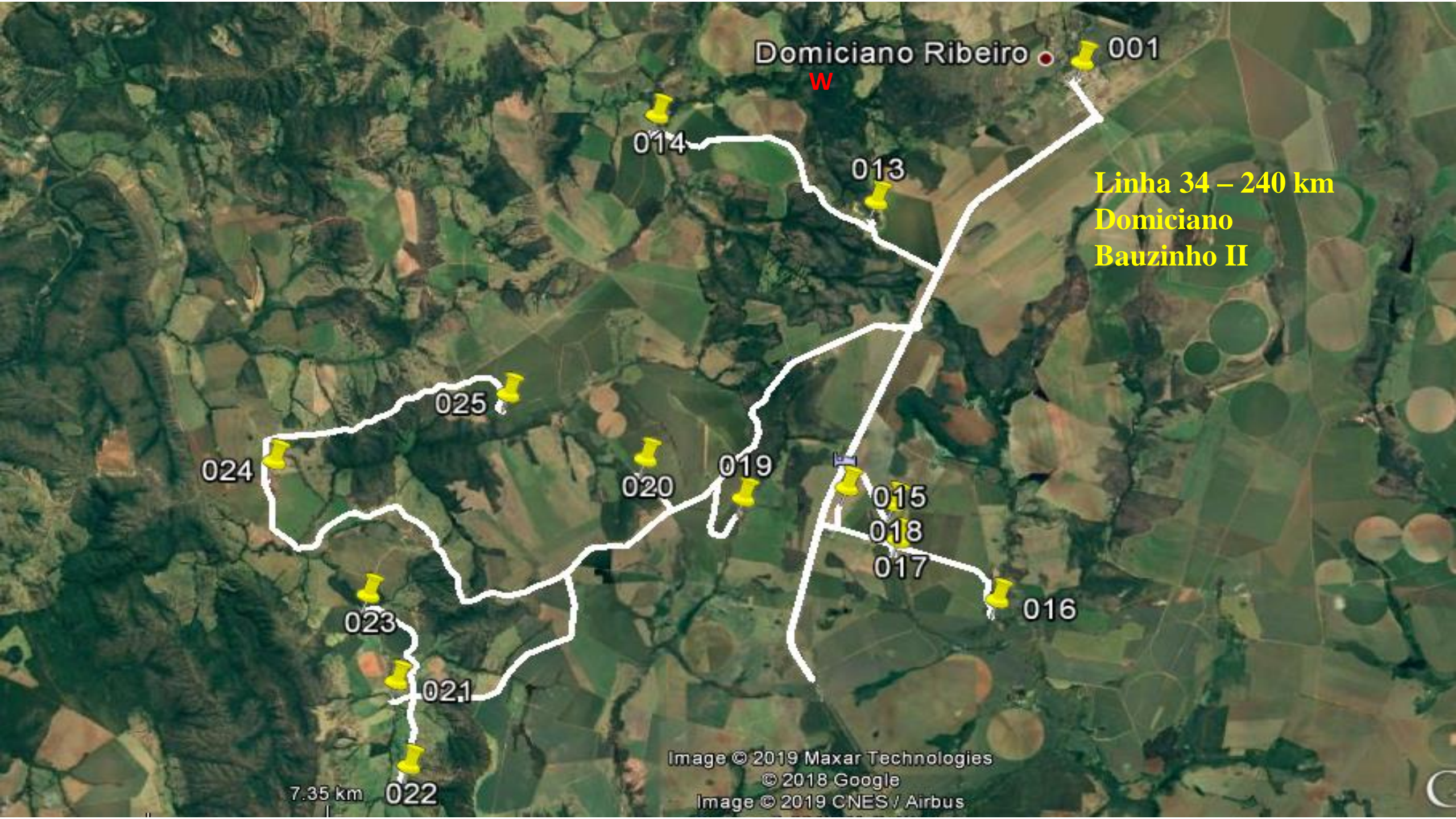
7.35 km

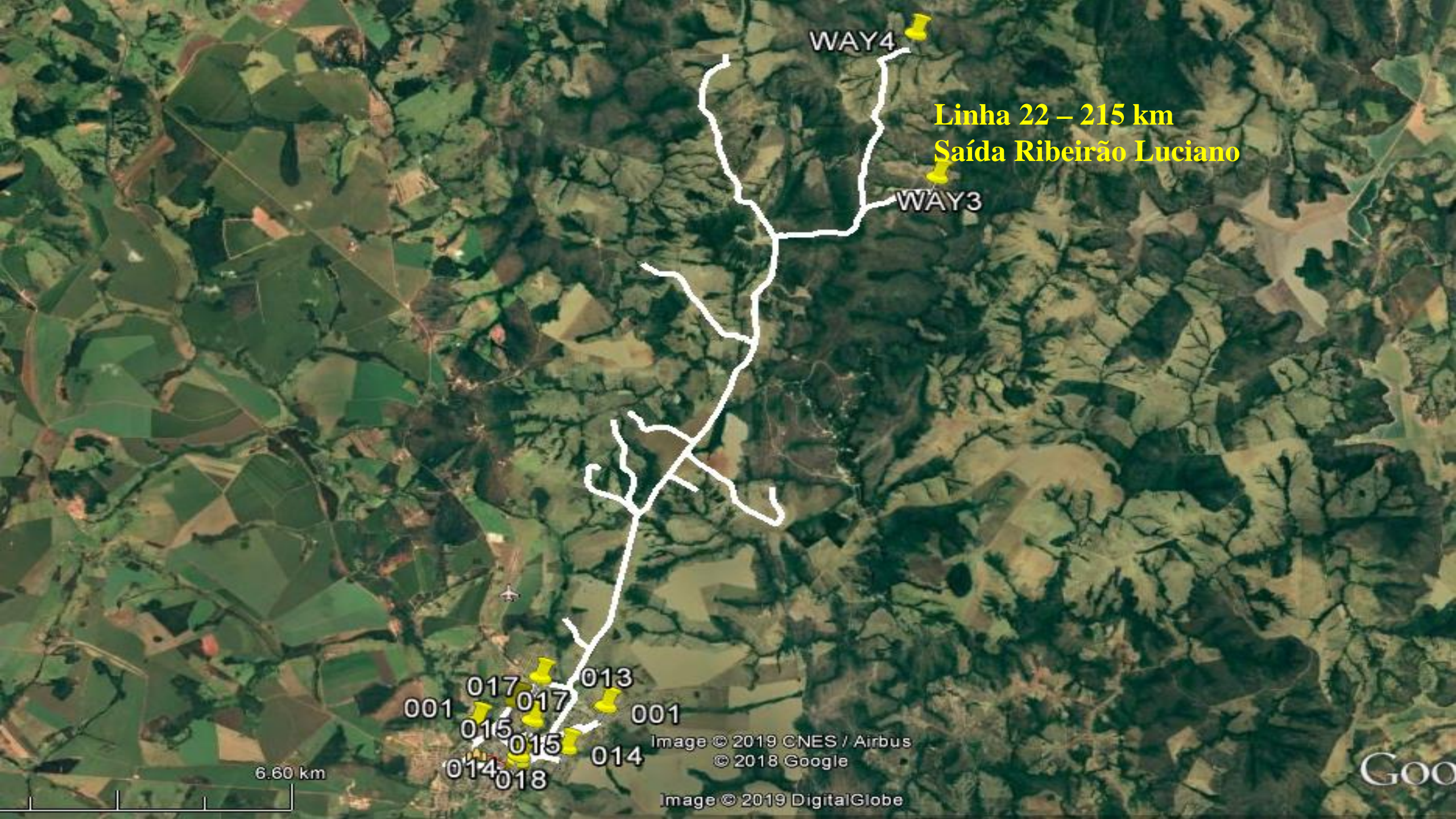
022

Image © 2019 Maxar Technologies

© 2018 Google

Image © 2019 CNES / Airbus





WAY4

Linha 22 – 215 km
Saída Ribeirão Luciano

WAY3

001 017 017 013 001
015 015 014 014
014 018

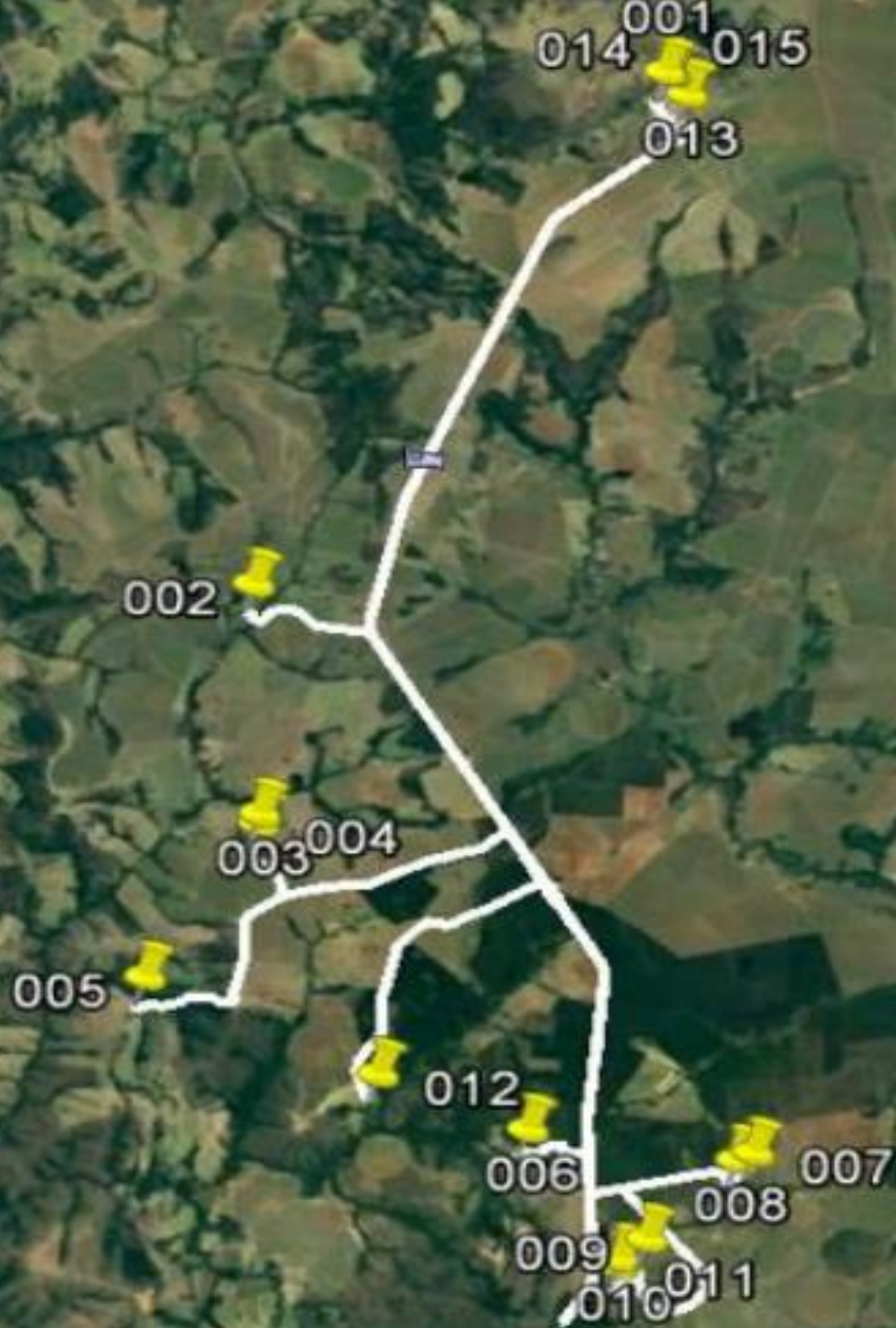
6.60 km

Image © 2019 CNES / Airbus
© 2018 Google

Image © 2019 DigitalGlobe

GOO

Linha 07 – 265 km
Saída p Goiânia
Região da Serrinha



Linha 11 – 166 km
Assentamento Olga Benário
Matutino



5.09 km

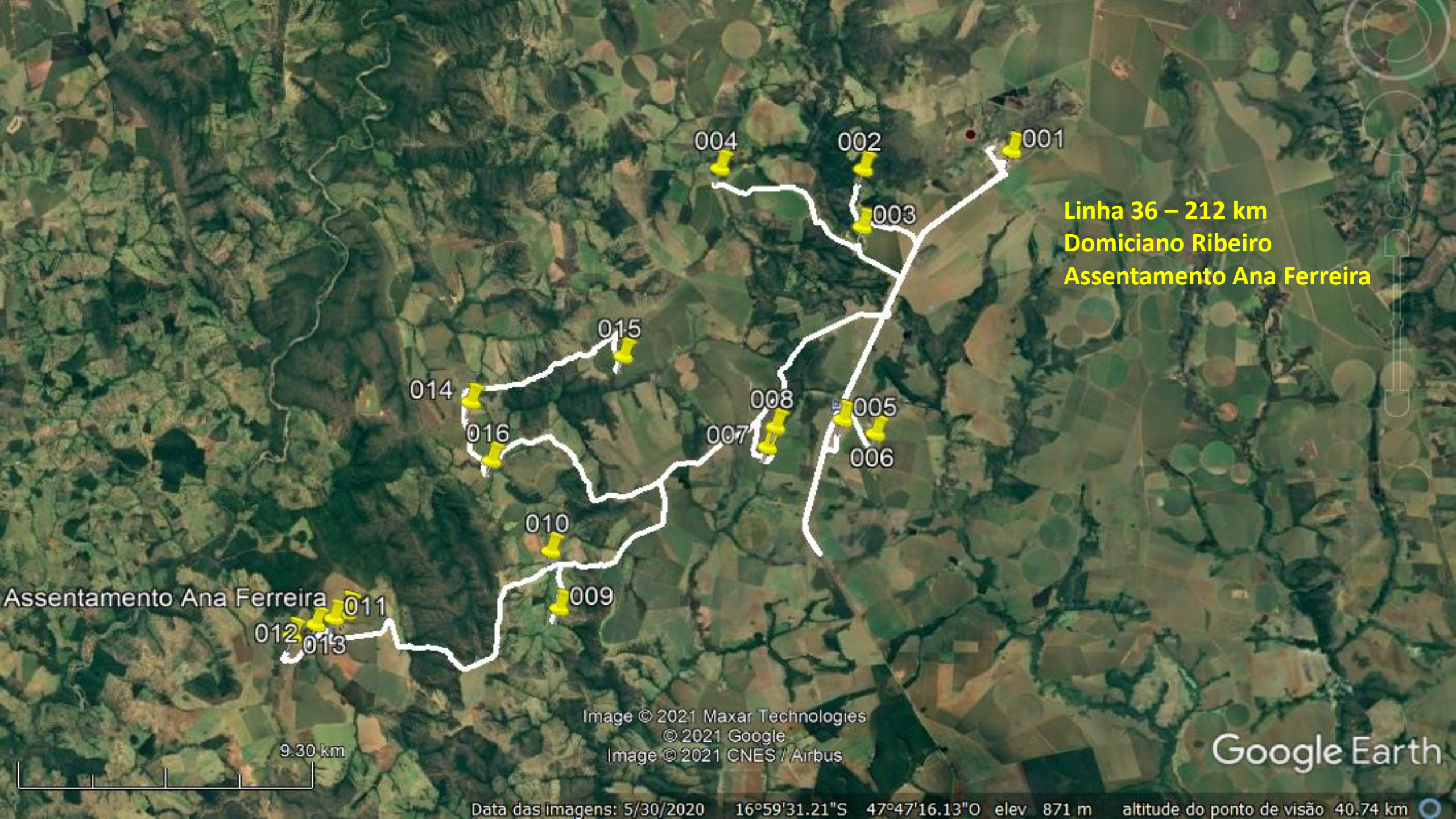
Linha 03 – 270 km
Saída p Campo Alegre

007
007 007
001 007

6.88 km

Image © 2021 CNES / Airbus
Image © 2021 Maxar Technologies
© 2021 Google

Google Earth



Linha 36 – 212 km
Domiciano Ribeiro
Assentamento Ana Ferreira

Assentamento Ana Ferreira

012 013

011

009

010

016

014

015

004

002

001

003

008

005

006

007

Image © 2021 Maxar Technologies
© 2021 Google
Image © 2021 CNES / Airbus

Google Earth



Data das imagens: 5/30/2020 16°59'31.21"S 47°47'16.13"O elev 871 m altitude do ponto de visão 40.74 km

001
Cavalheiro

Linha 27 – 305 km
Cavalheiros
Projeto Paineiras

008

006

009

007

005

004

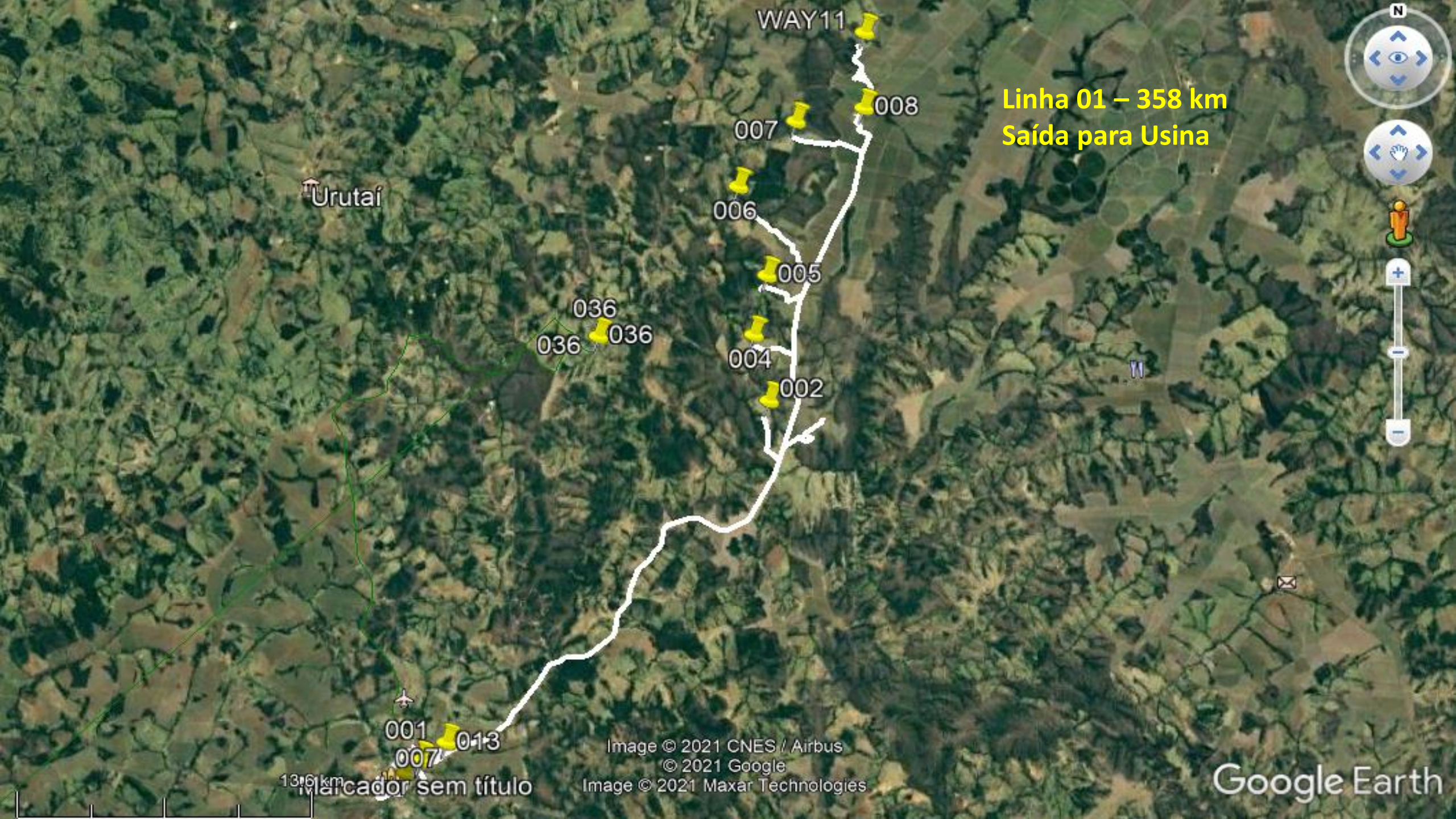
003

002

4.87 km

© 2021 Google
Image © 2021 CNES / Airbus
Image © 2021 Maxar Technologies

Google Earth



WAY11

Linha 01 – 358 km
Saída para Usina

Urutaí

008

007

006

005

036 036 036

004

002

001

013

007

13.6 km

marcador sem título

Image © 2021 CNES / Airbus

© 2021 Google

Image © 2021 Maxar Technologies

Google Earth

Linha 02 – 222 km
Saída para Caldas Novas
Vendinha



6.62 km

© 2021 Google
Image © 2021 Maxar Technologies

Google E

Data das imagens: 8/27/2020 17°41'30.03"S 48°16'42.21"O elev 868 m altitude do ponto de visão 29.4

Linha 05 – 267 km
Taquaril

MÉDIA

017

WAY45

013

016

WAY47

WAY46

013

WAY46

WAY47

012

001

7.93 km

© 2021 Google
Image © 2021 CNES / Airbus
Image © 2021 Maxar Technologies

Google Earth



Linha 08 – 160 km
Genipapo

MÉDIA

017
016 015
013 005 001
001 019 013
012 014

© 2021 Google
Image © 2021 CNES / Airbus
Image © 2021 Maxar Technologies

6.42 km

Google Earth

Data das imagens: 8/27/2020 17°40'23.58"S 48°08'56.42"O elev 829 m altitude do ponto de visão 28.37 km

**Linha 17 – 122 km
Urbana**



1226 m

© 2021 Google
Image © 2021 Maxar Technologies

Google Earth